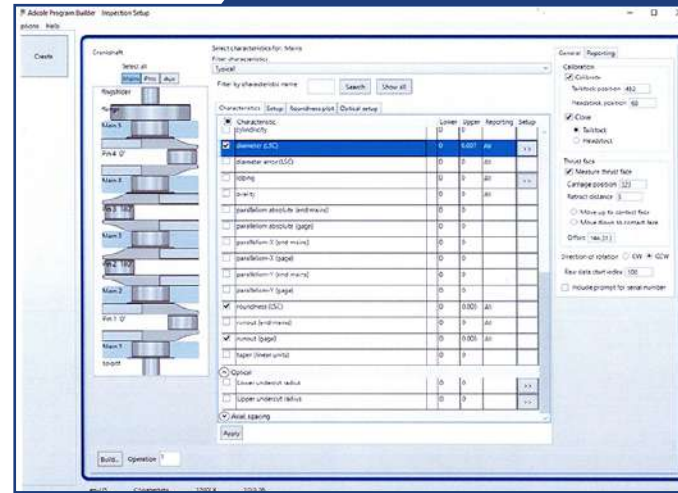


# Program Builder

## PROGRAM BUILDER



*Program Builder allows users to reuse previously built inspection operations for new tasks*

The **Adcole Program Builder** is a comprehensive part design, inspection and report template generating software solution developed for camshaft, crankshaft and cylindrical part metrology. This exclusive gage software offers an easy-to-use characteristics checklist — eliminating errors and providing operability to all users, regardless of skill level. Program Builder provides camshaft and crankshaft radial, linear and axial measurement parameters and can be customized for applications that require unique inputs and outputs. Program Builder is available for 911, 1100, 1100-GX, 1200-LX, and 1200-SH model gages.

### Program Builder software is ideal for measuring challenging features on:

- Complex camshaft and crankshaft assemblies, specifically:
  - Radial, linear, axial measurement parameters
- Cylindrical parts
- Heavy diesel camshafts and crankshafts
- Transmission & output shafts
- Other cylindrical components

### Features

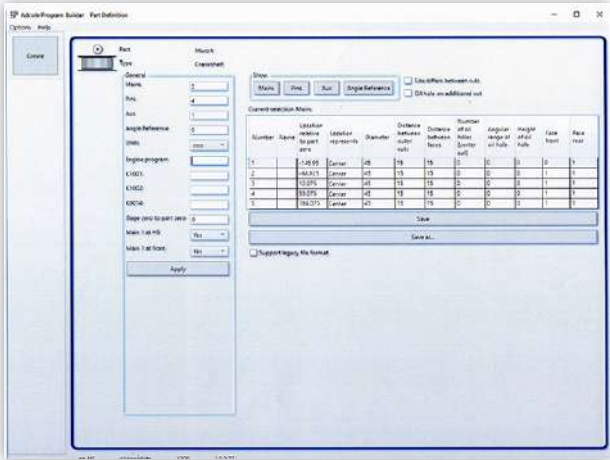
- Offers a complete solution for complex camshaft and crankshaft part definition, measurement and reporting
- Allows inspection package development with easy-to-use characteristic (or parameter) checklist and tabbed features
- Creates customizable characteristic checklists that include only the parameters that you require
- Integrates multiple utilities in one output-driven software solution with online and offline programming capability
- Enables users to set Qs-stat's K 2005 (characteristic class) independently for each operation
- Creates reports and SPC templates based on selected features
- Imparts reuse selections on similar parts or for similar operations

### Benefits

- Allows reuse of previously built inspection operations for new tasks, reducing time and effort needed to program inspections
- Generates output and SPC reports including specified graphical outputs automatically, and builds all the necessary files for measurement and output
- Offers easy-to-use interface and user-friendly part programming capabilities
- Extends flexible parameter reporting and graphical outputs to users
- Increases your throughput, saves time and money by improving your quality inspection process
- Eliminates the chance for introducing errors to your output templates with seamless automatic report template generation
- Enables users to easily integrate new features/measurement using versatile software structure

## Program Builder Software Specifications

Operating System	32-Bit versions of Windows 10, Windows 7
.NET Framework	4.5
Monitor Resolution	1280 x 1024 minimum
Adcole Gages Supported	911, 1100, 1100-GX, 1200-LX, 1200-SH
Gage software prior to 2018 requires a software upgrade	



*Program Builder offers part geometry, measurement operation and report capabilities.*

## Parameters Supported

<ul style="list-style-type: none"> <li>Angularity</li> <li>Axial Location</li> <li>Cam Lobe Lift Error</li> <li>Chatter</li> <li>Cylindricity</li> <li>Eccentricity</li> <li>Journal Lobing</li> <li>Linear Barreling</li> <li>Parallelism</li> <li>Profile</li> <li>Roundness</li> <li>Straightness</li> <li>Throw/Stroke</li> <li>Velocity</li> </ul>	<ul style="list-style-type: none"> <li>Axial Length/Spacing</li> <li>Base Circle Radius</li> <li>Center Deviation</li> <li>Concentricity</li> <li>Diameter</li> <li>Flatness</li> <li>Lobing</li> <li>Linear Profile</li> <li>Perpendicularity</li> <li>Radius</li> <li>Runout</li> <li>Taper</li> <li>True Position</li> <li>Width</li> </ul>
---	--

### Adcole Software Support

Adcole software support is provided by an expert software engineering team that is backed by 50 years of industry experience and ISO 9000:2015 annual certification. Software support, software upgrade services, custom software services and training are offered to our global customer base. Regular email and phone support is available 8am-6 pm EST.